



## Posi-Close Planter Wheels Bearing and Snap Ring Cross Reference Guide

### Posi-Close Wheel PW-193NT (5/8"/16MM Bolt Style)

**Schlagel MFG : HW-1390**

**John Deere: AN212132**

**Peer: 5203KYY2**

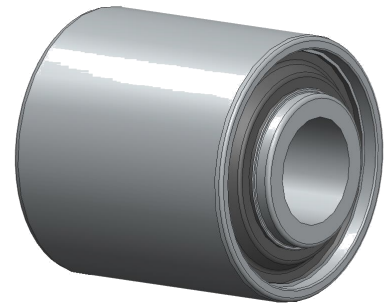
**White: 854003**

**Great Plains: 822-1070C**

**Case IH : 306007A1**

**Kinze: GA6171**

**BCA: 5203VVAN**



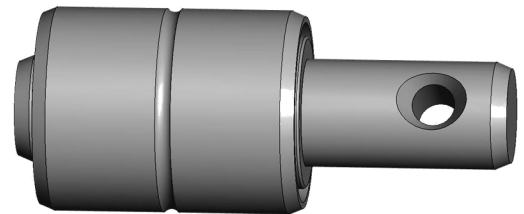
### Posi-Close Wheel PW-065NT (Spindle W/Hole)

**Schlagel MFG : HW-1361**

**John Deere: AN21015-or-AN35741**

**Kinze: GA2116**

**Koyo: WB7330SRR2**



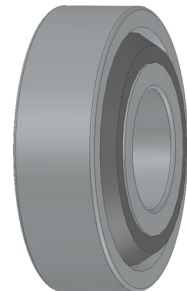
### Posi-Close Wheel PW-066NT (Metal Seal With Bearing)

**Schlagel MFG : HW-1376**

**John Deere: AN34134-or-JD203**

**Peer: SX0366LULC3L627**

**Koyo: 83B607ACS8**



### Snap Ring Cross Reference

**Schlagel MFG : HW-1364 (PW-193NT & PW-066NT)**

**Industry Standard Part Number: HO-156**

**Schlagel MFG: HW-1363 (PW-065NT)**

**Industry Standard Part Number: HO-118**





## Rapid Till and Rapid Till HD Bearing and Snap Ring Cross Reference Guide

### Rapid Till and Rapid Till HD (Flat Coulter & Wavy Coulter Bearing )

**Schlagel MFG : HW-1461**

**Peer: 206KPP16**

**Timken: 206KPP16**

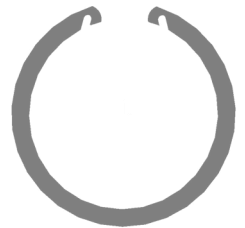
**BCA: 206GGH**



### Rapid Till and Rapid Till HD (Flat Coulter & Wavy Coulter Snap Ring)

**Schlagel MFG : HW-1460**

**Industry Standard Part Number: IN244**



### Rapid Till and Rapid Till HD (Row Cleaner and Rear Packers Wheel Bearing )

**Schlagel MFG : HW-1390**

**John Deere: AN212132**

**Peer: 5203KYY2**

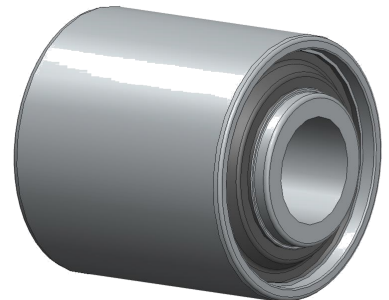
**White: 854003**

**Great Plains: 822-1070C**

**Case IH : 306007A1**

**Kinze: GA6171**

**BCA: 5203VVAN**



### Rapid Till and Rapid Till HD (Row Cleaner and Rear Packer Wheels Snap Ring )

**Schlagel MFG : HW-1364**

**Industry Standard Part Number: HO-156**

